

STREET LIGHTS



ST-3060A

Power: 60W
CCT: 3000K/5000K Ra: ≥80
Efficacy: 90lm/W
Beam Angle: 145°(H)×65°(V)
Input Voltage: 100-277V ~ 50/60Hz
Dimensions: 563(L)×225(W)×200(H)mm
22.77(L)×5.86(W)×7.87(H)in
Weight: 3.9kg/8.6lb



ST-3120A

Power: 120W
CCT: 3000K/5000K Ra: ≥80
Efficacy: 90lm/W
Beam Angle: 145°(H)×65°(V)
Input Voltage: 100-277V ~ 50/60Hz
Dimensions: 680(L)×265(W)×200(H)mm
26.77(L)×10.43(W)×8.07(H)in
Weight: 6.3kg/13.89lb



ST-3200A

Power: 200W
CCT: 3000K/5000K Ra: ≥80
Efficacy: 90lm/W
Beam Angle: 145°(H)×65°(V)
Input Voltage: 100-277V ~ 50/60Hz
Dimensions: 834(L)×283(W)×170(H)mm
32.83(L)×11.14(W)×6.69(H)in
Weight: 9.7kg/21.38lb



ST-2060/2060A

Power: 60W
CCT: 3000K/5000K Ra: ≥80
Efficacy: 90lm/W
Beam Angle: 145°(H)×65°(V)
Input Voltage: 100-277V ~ 50/60Hz
Dimensions: 430(L)×185(W)×215(H)mm
16.93(L)×7.28(W)×8.46(H)in
Weight: 3.9kg/8.6lb



ST-2120/2120A

Power: 120W
CCT: 3000K/5000K Ra: ≥80
Efficacy: 92lm/W
Beam Angle: 145°(H)×65°(V)
Input Voltage: 100-277V ~ 50/60Hz
Dimensions: 495(L)×225(W)×225(H)mm
19.49(L)×8.86(W)×8.86(H)in
Weight: 5.2kg/11.46lb



ST-2200/2200A

Power: 200W
CCT: 3000K/5000K Ra: ≥80
Efficacy: 86lm/W
Beam Angle: 145°(H)×65°(V)
Input Voltage: 100-277V ~ 50/60Hz
Dimensions: 620(L)×300(W)×158(H)mm
24.41(L)×11.81(W)×6.22(H)in
Weight: 8.1kg/17.86lb

SOLAR



SR-1004

Power: 4W
Solar Panel: 10W
CCT: 3000K/4000K/6000K Ra: ≥80
Beam Angle: 120°
Dimensions: 410(L)×270(W)×43(H)mm
16.14(L)×10.63(W)×1.69(H)in
Weight: 1.6kg/3.64lb
IP65



SR-1010

Power: 10W
Solar Panel: 20W
CCT: 3000K/4000K/6000K Ra: ≥80
Beam Angle: 120°
Dimensions: 670(L)×276(W)×100(H)mm
26.36(L)×10.87(W)×3.94(H)in
Weight: 4.7kg/10.36lb
IP65



SR-1020

Power: 20W
Solar Panel: 40W
CCT: 3000K/4000K/6000K Ra: ≥80
Beam Angle: 120°
Dimensions: 358(L)×227(W)×150(H)mm
14.09(L)×8.94(W)×5.91(H)in
Weight: 2.58kg/5.69lb
IP65



SR-1030

Power: 30W
Solar Panel: 60W
CCT: 3000K/4000K/6000K Ra: ≥80
Beam Angle: 120°
Dimensions: 365.5(L)×227(W)×150(H)mm
14.39(L)×8.94(W)×5.91(H)in
Weight: 2.59kg/5.71lb
IP65



SR-1048

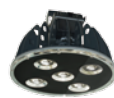
Power: 48W
Solar Panel: 90W
CCT: 3000K/4000K/6000K Ra: ≥80
Beam Angle: 120°
Dimensions: 353.5(L)×184(W)×145(H)mm
13.92(L)×7.24(W)×5.71(H)in
Weight: 2.5kg/5.51lb
IP65



SR-1080

Power: 80W
Solar Panel: 150W
CCT: 3000K/4000K/6000K Ra: ≥80
Beam Angle: 145°(H)×65°(V)
Dimensions: 425(L)×224(W)×145.5(H)mm
16.73(L)×8.82(W)×5.73(H)in
Weight: 4kg/8.82lb
IP65 IK09

HIGH BAYS



HB-3100A/3150A

Power: 100/150W
CCT: 3000K/5000K Ra: ≥80
Efficacy: 89lm/W
Beam Angle: 60°/90°/120°
Input Voltage: 100-277V ~ 50/60Hz
Dimensions: 335(L)×335(W)×225(H)mm
13.19(L)×13.19(W)×8.86(H)in
Weight: 5kg/11.02lb



HB-3180/3250A

Power: 180/250W
CCT: 3000K/5000K Ra: ≥80
Efficacy: 90lm/W
Beam Angle: 60°/90°/120°
Input Voltage: 100-277V ~ 50/60Hz
Dimensions: 405(L)×405(W)×300(H)mm
15.94(L)×15.94(W)×11.81(H)in
Weight: 9.7kg/21.38lb



HB-2100LW

Power: 100W
CCT: 5000K Ra: ≥70
Efficacy: 115lm/W
Beam Angle: 100°
Input Voltage: 100-277V ~ 50/60Hz
Dimensions: 389(H)×Φ495mm
15.31(H)×Φ19.49in
Weight: 4.6kg/10.14lb

HB-2150LW
HB-2200LW

Power: 150/200W
CCT: 5000K Ra: ≥70
Efficacy: 103lm/W
Beam Angle: 100°
Input Voltage: 100-240/277V ~ 50/60Hz
Dimensions: 397(H)×Φ495mm / 422(H)×Φ495mm
15.63(H)×Φ19.49in / 16.61(H)×Φ19.49in
Weight: 5.8kg / 6.8kg
12.78lb / 14.99lb



HB-2250LW

Power: 250W
CCT: 5000K Ra: ≥70
Efficacy: 101lm/W
Beam Angle: 100°
Input Voltage: 100-240/277V ~ 50/60Hz
Dimensions: 456(H)×Φ495mm
17.95(H)×Φ19.49in
Weight: 9kg/19.84lb

LOW BAYS / INTERIOR



LB-1040/1060/1080

Power: 40/60/80W
CCT: 3000K/6000K Ra: ≥80
Efficacy: 91lm/W
Beam Angle: 120°
Input Voltage: 100-220V ~ 50/60Hz
Dimensions: 325(L)×310(W)×145(H)mm
12.8(L)×12.21(W)×5.71(H)in
Weight: 3.2kg/7.05lb



LB-1010A/1018A

Power: 10/18W
CCT: 3000K/5000K Ra: ≥80
Efficacy: 99lm/W
Beam Angle: 93°
Input Voltage: 100-277V ~ 50/60Hz
Dimensions: 600(L)×50(W)×30(H)mm
23.62(L)×1.97(W)×1.18(H)in
Weight: 1.2kg/2.65lb



LB-1022B/1044B

Power: 22/44W
CCT: 5000K Ra: ≥80
Efficacy: 101lm/W
Beam Angle: 93°
Input Voltage: 100-277V ~ 50/60Hz
Dimensions: 1200(L)×50(W)×30(H)mm
47.24(L)×1.97(W)×1.18(H)in
Weight: 2kg/4.41lb



MB-2040AL

Power: 40W
CCT: 5000K Ra: ≥80
Efficacy: 80lm/W
Beam Angle: 120°
Input Voltage: 100-277V ~ 50/60Hz
Dimensions: 603(L)×603(W)×12.5(H)mm
23.74(L)×23.74(W)×0.49(H)in
Weight: 3kg/6.61lb



MB-2080CL

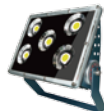
Power: 80W
CCT: 5000K Ra: ≥80
Efficacy: 80lm/W
Beam Angle: 120°
Input Voltage: 100-277V ~ 50/60Hz
Dimensions: 1213(L)×603(W)×12(H)mm
47.75(L)×23.74(W)×0.47(H)in
Weight: 7.4kg/16.31lb

FLOOD LIGHTS



FL-3030

Power: 30W
CCT: 3000K/5000K Ra: ≥80
Efficacy: 89lm/W
Beam Angle: 60°/90°/120°
Input Voltage: 100-277V ~ 50/60Hz
Dimensions: 180(L)×115(W)×95(H)mm
7.09(L)×4.53(W)×3.74(H)in
Weight: 1.2kg/2.65lb
UL, CE, RoHS, IP65 IK08



FL-3040

Power: 40W
CCT: 3000K/5000K Ra: ≥80
Efficacy: 83lm/W
Beam Angle: 60°/90°/120°
Input Voltage: 100-277V ~ 50/60Hz
Dimensions: 290(L)×184(W)×103(H)mm
11.42(L)×7.24(W)×4.06(H)in
Weight: 2.4kg/5.29lb
UL, CE, RoHS, IP65 IK09



FL-3060

Power: 60W
CCT: 3000K/5000K Ra: ≥80
Efficacy: 84lm/W
Beam Angle: 60°/90°/120°
Input Voltage: 100-277V ~ 50/60Hz
Dimensions: 290(L)×184(W)×103(H)mm
11.42(L)×7.24(W)×4.06(H)in
Weight: 2.4kg/5.29lb
UL, CE, RoHS, IP65 IK09



FL-3100/3150A

Power: 100/150W
CCT: 3000K/5000K Ra: ≥80
Efficacy: 90lm/W
Beam Angle: 60°/90°/120°
Input Voltage: 100-277V ~ 50/60Hz
Dimensions: 340(L)×320(W)×145(H)mm
13.39(L)×12.6(W)×5.71(H)in
Weight: 5.3kg/11.68lb
UL, CE, RoHS, IP65 IK09



FL-3250/3250A

Power: 250W
CCT: 3000K/5000K Ra: ≥80
Efficacy: 88lm/W
Beam Angle: 60°/90°/120°
Input Voltage: 100-277V ~ 50/60Hz
Dimensions: 440(L)×300(W)×200(H)mm
17.32(L)×11.81(W)×7.87(H)in
Weight: 9kg/19.84lb
UL, CE, RoHS, IP65 IK09



FL-3520

Power: 520W
CCT: 3000K/5000K Ra: ≥80
Efficacy: 94lm/W
Beam Angle: 60°/90°/120°
Input Voltage: 100-277V ~ 50/60Hz
Dimensions: 580(L)×395(W)×355(H)mm
22.83(L)×15.55(W)×13.98(H)in
Weight: 23kg/50.71lb
UL, CE, RoHS, IP65 IK09

FLOOD LIGHTS



FL-5080/5160

Power: 80/160W
CCT: 5000K Ra: ≥70
Efficacy: 132lm/W
Beam Angle: 8°/17°/34°/62°/88°
Input Voltage: AC120-240/277V, 50/60Hz
DC12-24V
Dimensions: 300(L)×299(W)×293(H)mm
11.81(L)×11.77(W)×11.54(H)in
Weight: 6.1kg/13.45lb
UL, CE, IP65 IK08



FL-5320

Power: 320W/480W/640W
CCT: 5000K Ra: ≥70
Efficacy: 122lm/W
Beam Angle: 8°/17°/34°/62°/88°
Input Voltage: 120-240/277V ~ 50/60Hz
Dimensions: 300(L)×299(W)×371(H)mm
11.81(L)×11.77(W)×14.61(H)in
Weight: 13.2kg/29.1lb
UL, CE, IP65 IK08



FL-5090/5130

Power: 90/130W
CCT: 5000K Ra: ≥70
Efficacy: 105lm/W
Beam Angle: 12°/100°
Input Voltage: 100-240/277V ~ 50/60Hz
Dimensions: 293(L)×82(W)×308(H)mm
11.54(L)×3.23(W)×12.13(H)in
Weight: 5.5kg/12.13lb
UL, IP65



FL-3250N

Power: 250W
CCT: 3000K/5000K Ra: ≥80
Efficacy: 114lm/W
Beam Angle: 18°/28°/40°
Input Voltage: 100-277V ~ 50/60Hz
Dimensions: 440(L)×300(W)×270(H)mm
17.32(L)×11.81(W)×10.63(H)in
Weight: 8.7kg/19.18lb
UL, CE, IP65 IK08



FL-3520N

Power: 520W
CCT: 3000K/5000K Ra: ≥80
Efficacy: 107lm/W
Beam Angle: 18°/28°/40°
Input Voltage: 100-277V ~ 50/60Hz
Dimensions: 580(L)×400(W)×430(H)mm
22.83(L)×15.75(W)×16.93(H)in
Weight: 21kg/48.98lb
UL, CE, IP65 IK08



FL-41000N

Power: 1000W
CCT: 3000K/5000K Ra: ≥80
Efficacy: 96lm/W
Beam Angle: 18°/28°/40°
Input Voltage: 100-277V ~ 50/60Hz
Dimensions: 630(L)×520(W)×440(H)mm
24.8(L)×20.47(W)×17.32(H)in
Weight: 44kg/97.44lb
UL, CE, IP65 IK08



SONARAY®
Lighting everyone's dreams

CONTACT

North America
34 Lakeview Ct.
Verona, VA 24482
USA
Tel: +1-877-434-1377
Fax: +1-540-242-7221

- LED Flood Lights
- LED Street Lights
- LED Interior Lighting
- LED High Bays
- LED Low Bays
- LED Solar Lighting