



## Connecting a Dascom DP-540/55x/56x Printer to Windows® 8

This document includes the following instructions:

- [Installation & Configuration of the USB Cable Driver](#)
- [Making a Bluetooth Connection](#)
- [Printer Driver Installation](#)

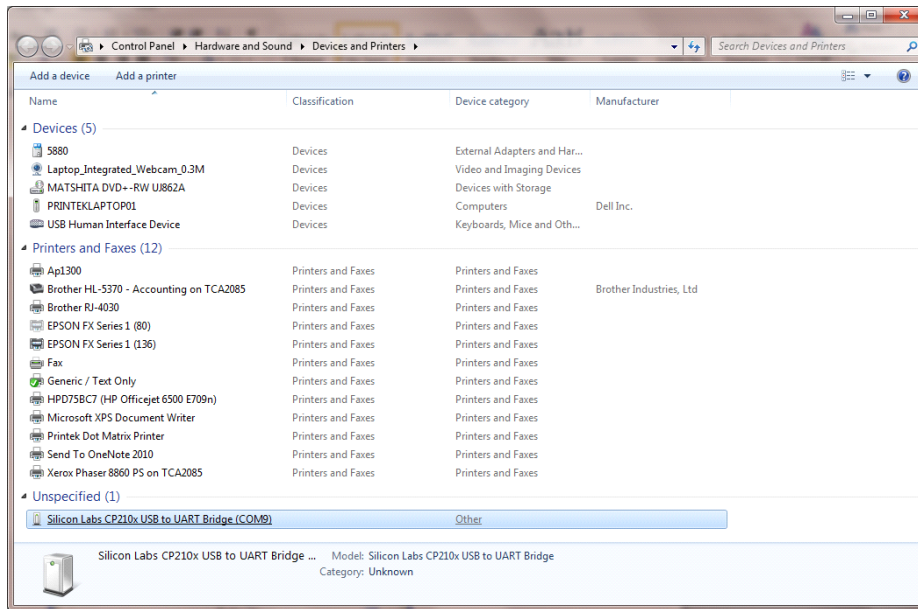
If you are connecting a printer using a USB or Bluetooth connection, please follow those instructions prior to installing the printer driver.

### Installation & Configuration of the USB Cable Driver

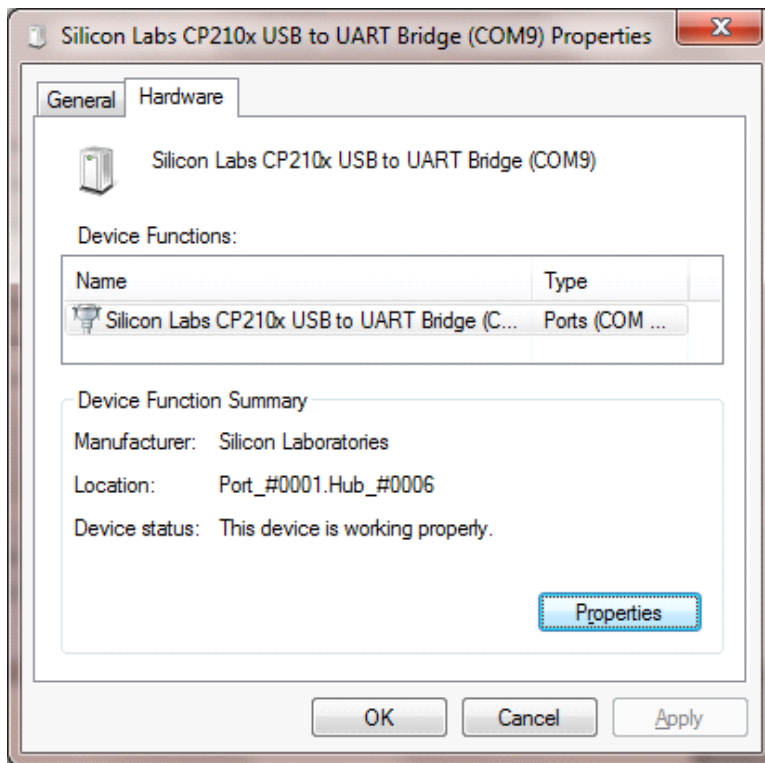
**Caution:** The USB Cable Driver **MUST** be installed **BEFORE** connecting the USB cable to the computer.

1. Browse to the USB Cable Driver folder and run the appropriate x86 or 64-bit installation program as required by your computer's operating system ("CP210xVCPInstaller\_x86.exe" or "CP210xVCPInstaller\_x64.exe").
2. Connect the USB cable to your computer.

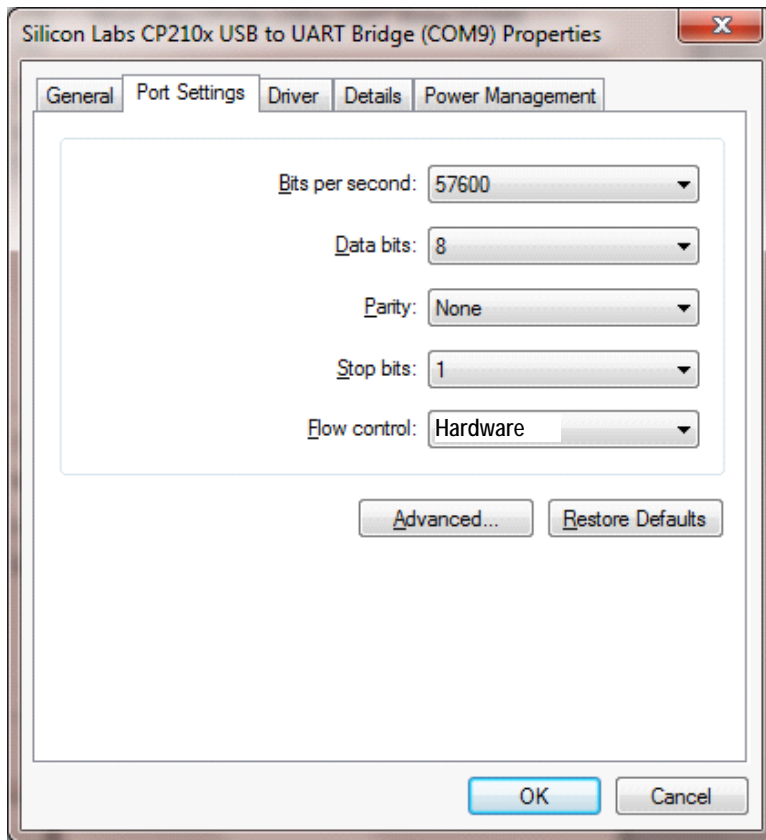
3. Go to Devices and Printers.



4. At the bottom of the screen, locate “Silicon Labs CP210x USB to UART Bridge (COM\_)” and make note of the COM number that has been assigned. This information will be required when installing the printer driver.
5. Right-click on the Silicon Labs device and select “Properties”.
6. Select the “Hardware” tab and click on “Properties”.



7. Select the “Port Settings” tab.



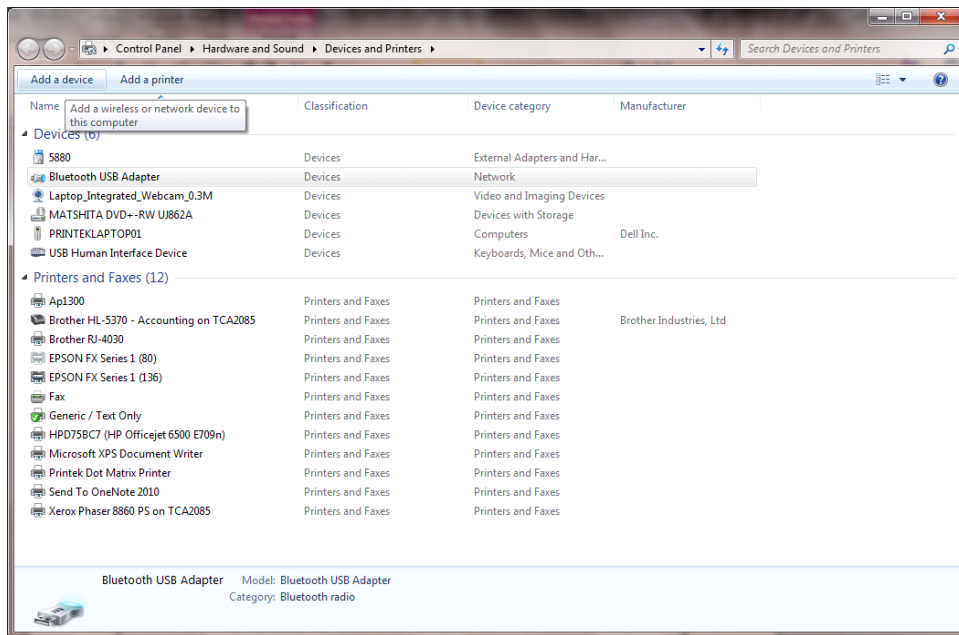
8. Set Bits per second to 57600 and set Flow control to Hardware.
9. Click on “OK” until you return to Devices and Printers
10. You may now proceed with the [Printer Driver Installation](#).

**Note:** When installing the printer driver, use the COM port number noted above.

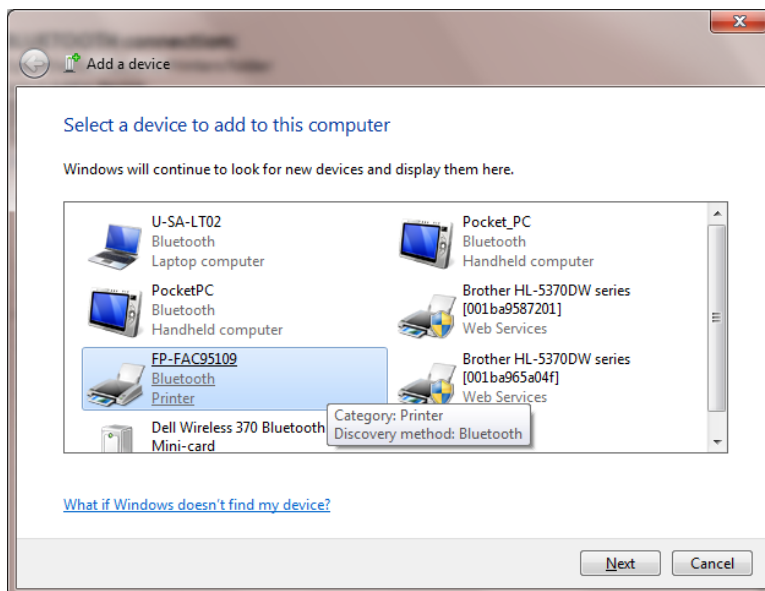
## Making a Bluetooth Connection

**Note:** Bluetooth implementations vary between computers. Your system may look slightly different than the images shown below.

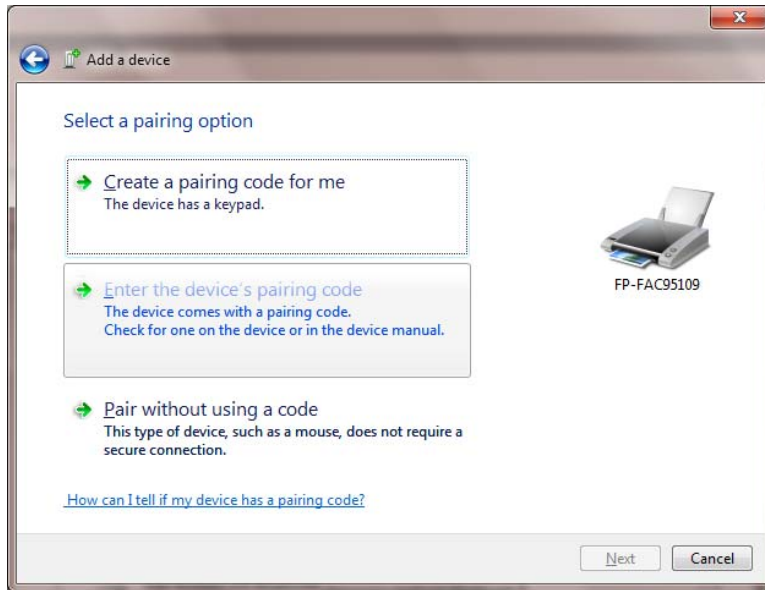
1. Go to Devices and Printers and click on “Add a device”.



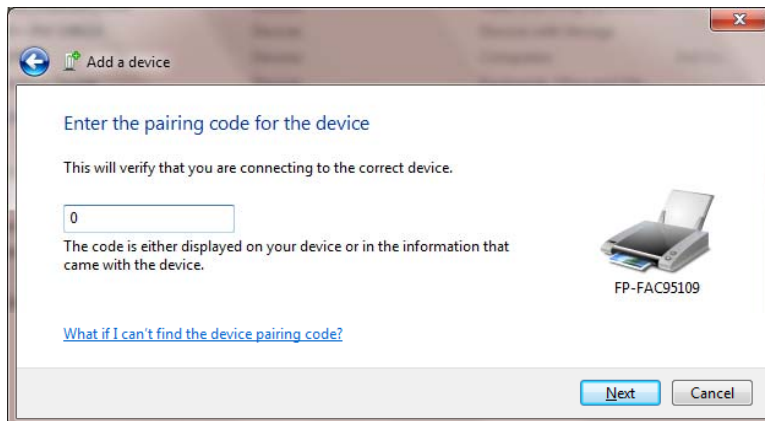
2. Locate the printer that is identified with the printer's serial number as printed on the bottom of the printer. Select the printer and click on “Next”.



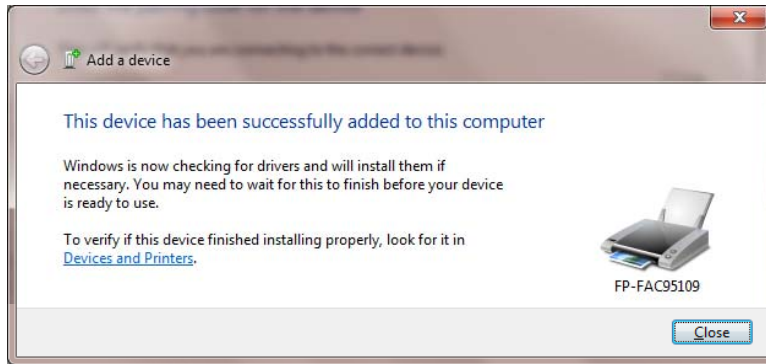
3. Select “Enter the device’s pairing code” and click on “Next”.



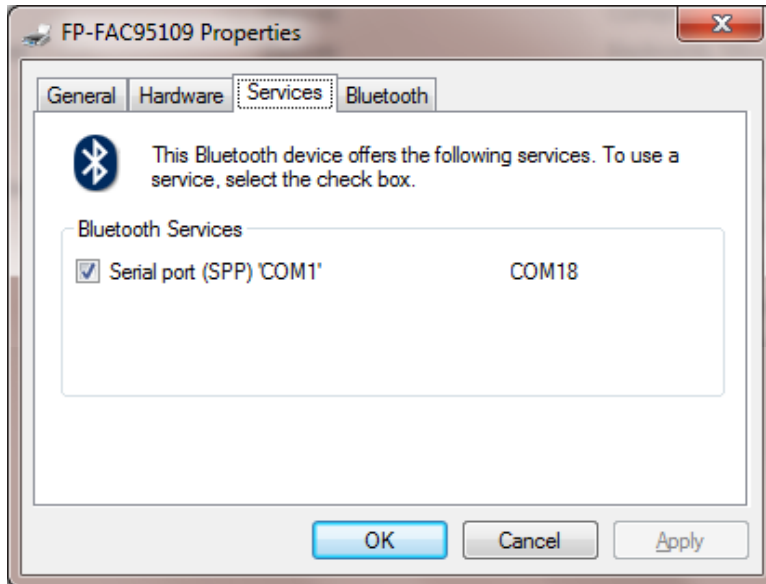
4. Enter “0” for the pairing code and click on “Next”. (“0” is the factory default pairing code value. If this does not allow you to make a connection, check with your system administrator.)



5. You will now receive confirmation that the printer “device” has been added to your computer. Click on “Finish”.



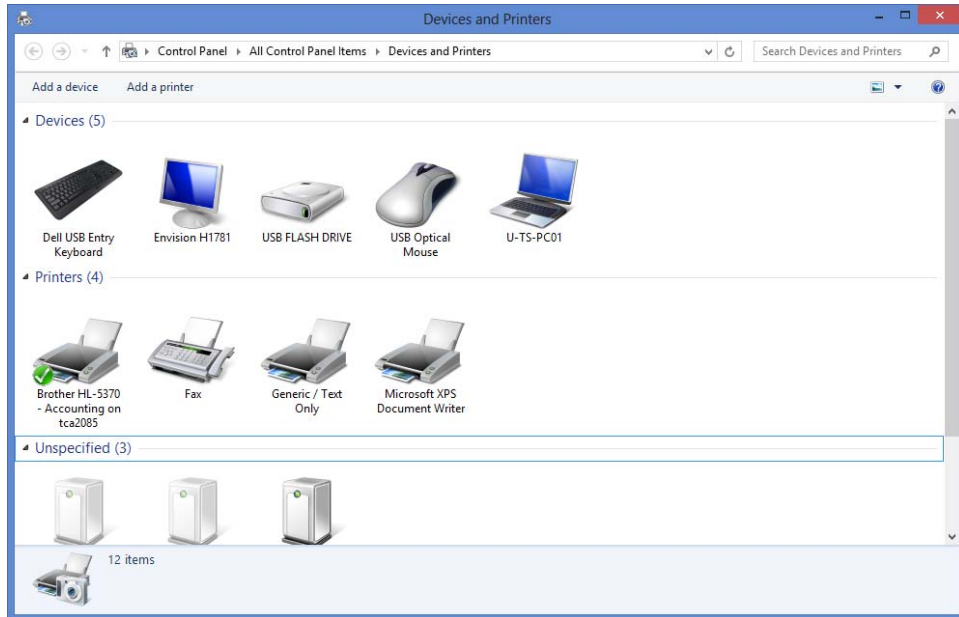
6. In Devices and Printers, locate the printer under devices. Right click on the printer and select “Properties”, then select the “Services” tab.



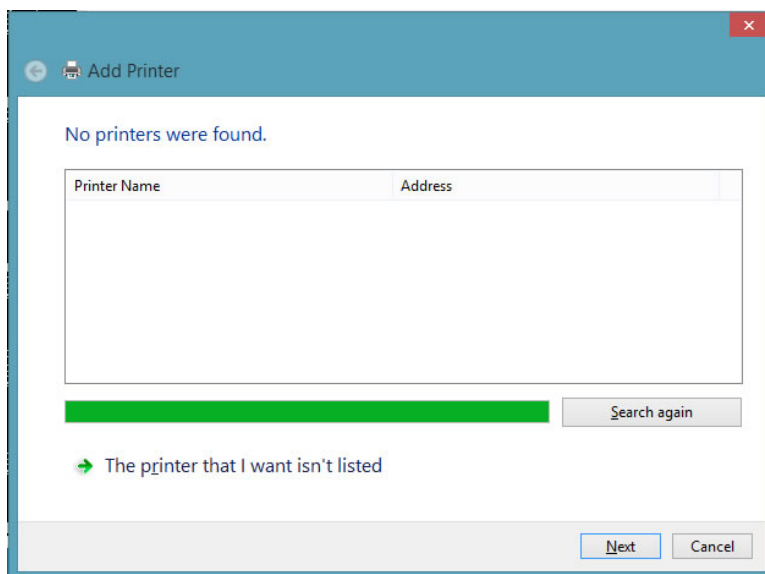
7. Make note of the COM port number that has been assigned. This information will be required when installing the printer driver.
8. Click on “OK”.
9. You may now proceed with the [Printer Driver Installation](#).

## Printer Driver Installation

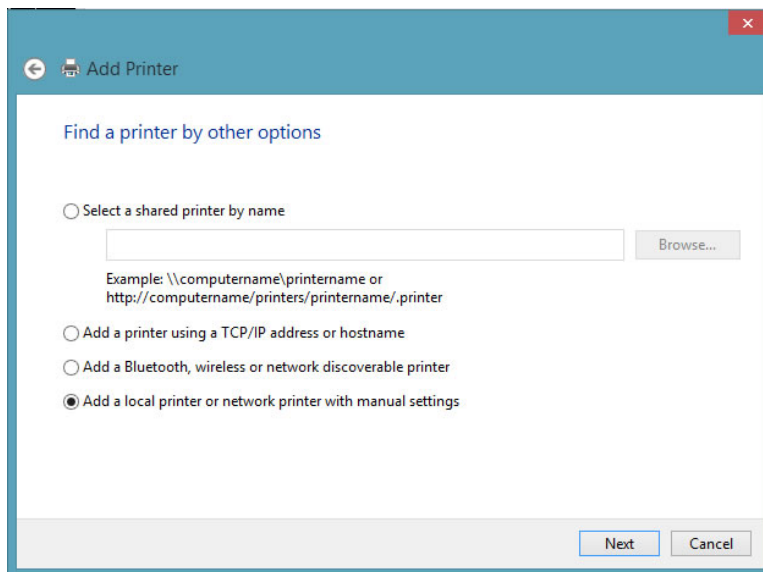
1. Invoke the Add Printer Wizard by going to “Devices and Printers”, and clicking on “Add a printer”.



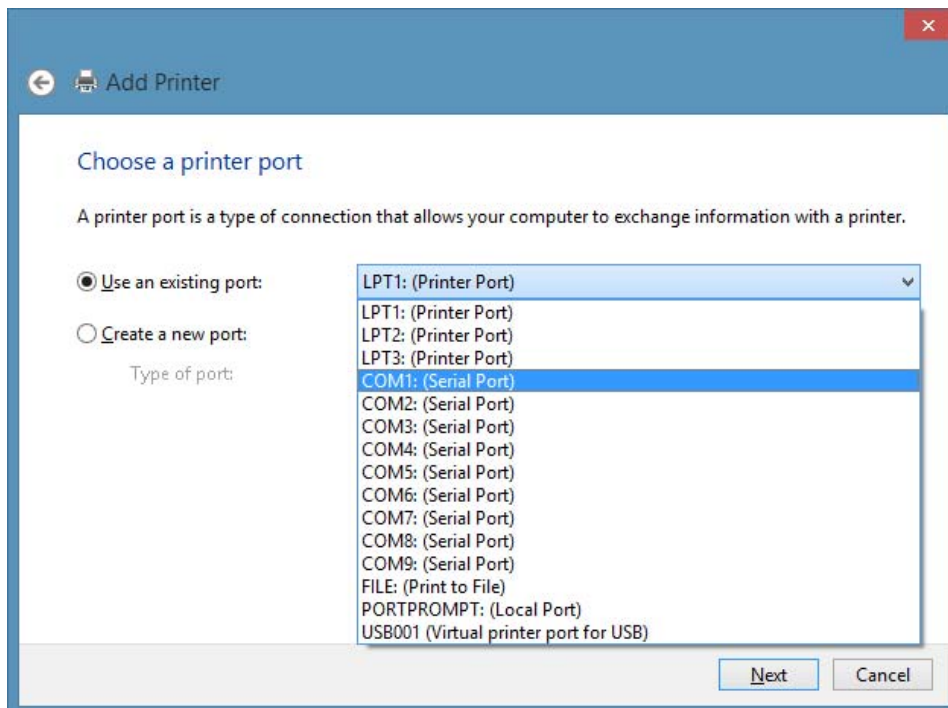
2. When reported that the system cannot find the printer (or does not include the printer you are installing), click on “Next.”



3. Select “Add a local printer or network printer with manual settings” and click on “Next”.



4. Select “Use an existing port”.



5. Pull down the list of ports, select the appropriate port as described below, and click on “Next”.

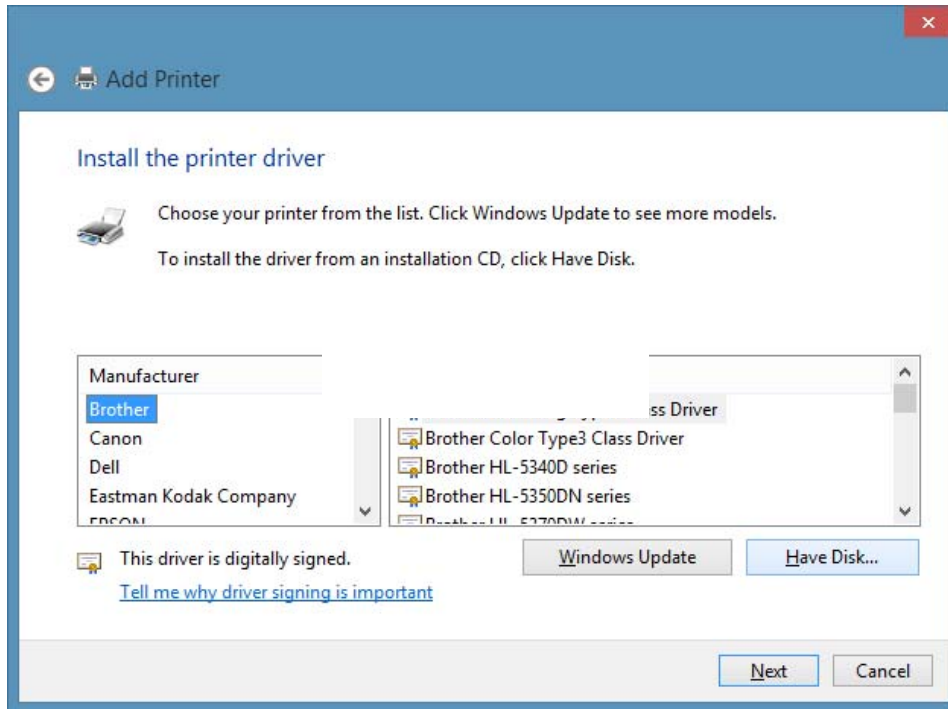
**Serial RS-232:** Select the COM port you have connected the printer to.

**USB:** Select the COM port noted earlier when the USB Cable Driver was installed. Note that connecting the printer to a different USB port may cause the port number to change.

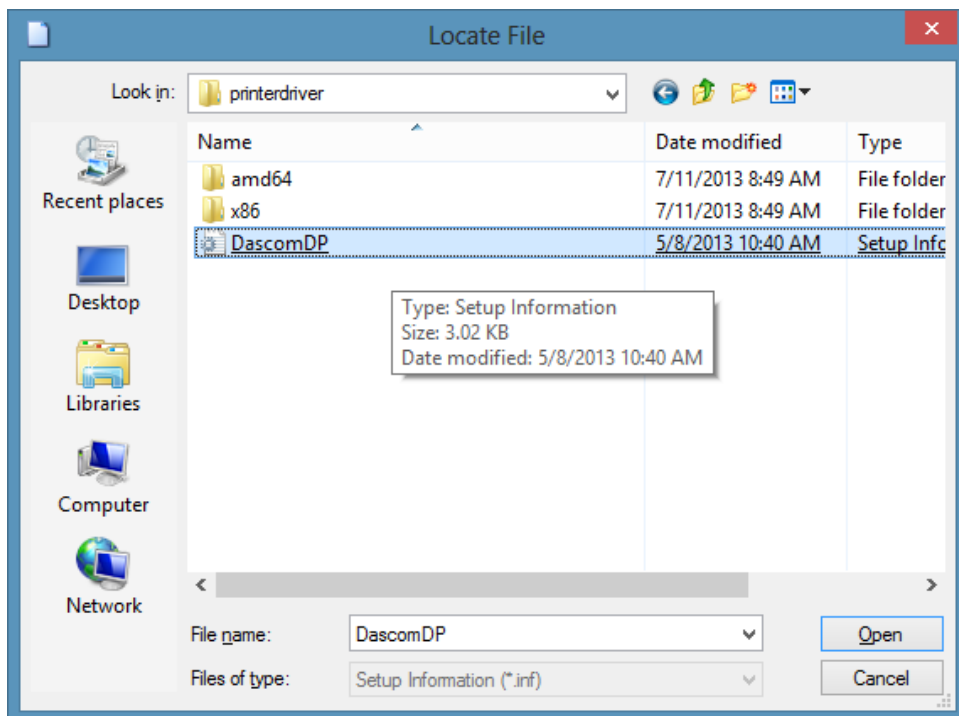
**Bluetooth:** Select the COM port noted earlier when making the Bluetooth connection.



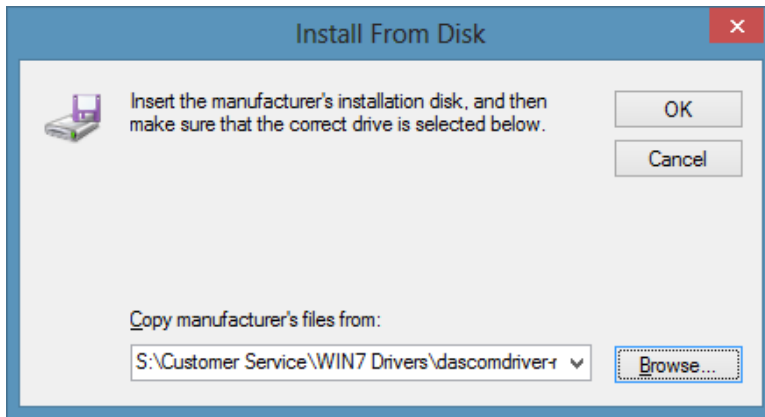
6. Click on “Have Disk...”.



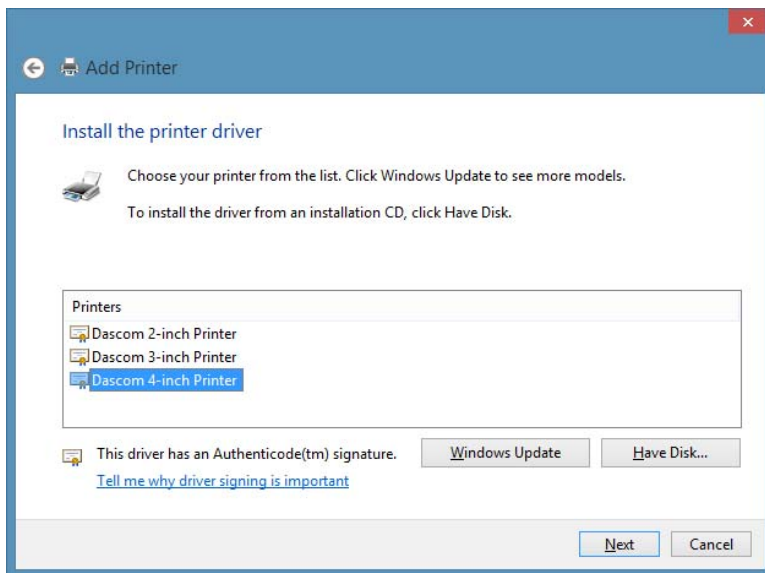
7. Browse to the folder where you have unzipped or copied the driver files. Select “DascomDP” and click on “Open”.



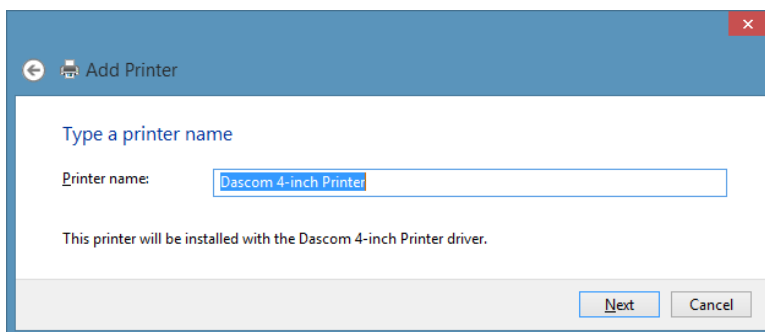
8. Click on “OK”.



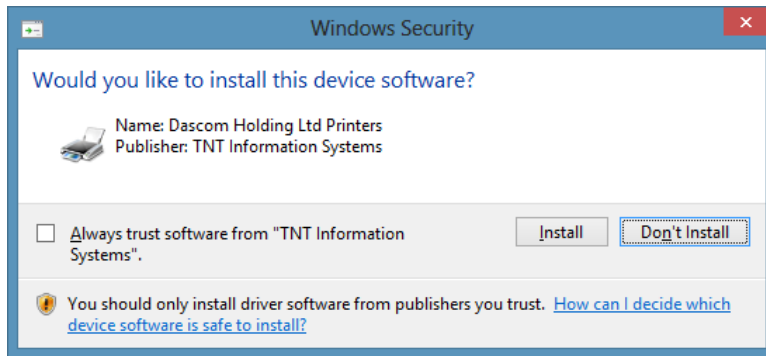
9. Select the printer width that matches the printer model you are installing and click on “Next”.



10. If desired, you may now enter a printer name that describes your installation environment.



11. A Windows Security window will appear. Click “Install”.



12. In the following screens regarding sharing and setting the printer as the default, make the appropriate choices for your installation and click Next/Finish to complete the installation.

13. The printer will no appear in your Devices and Printers folder.

