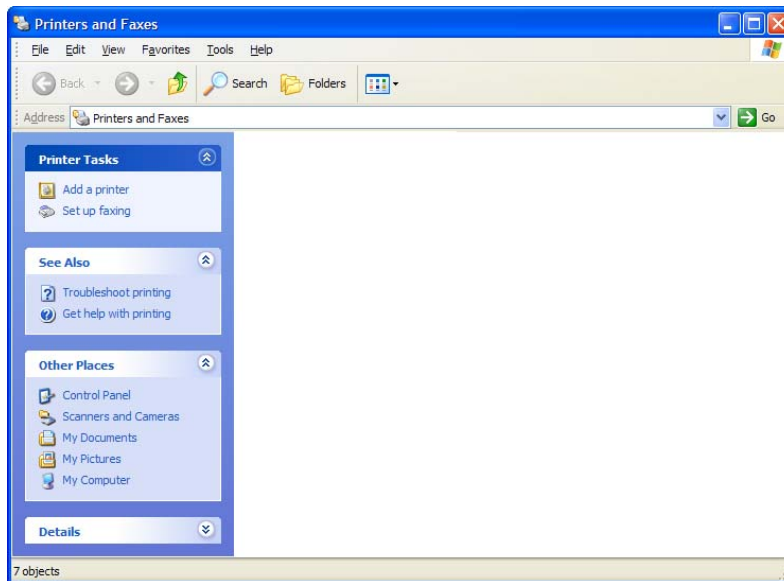




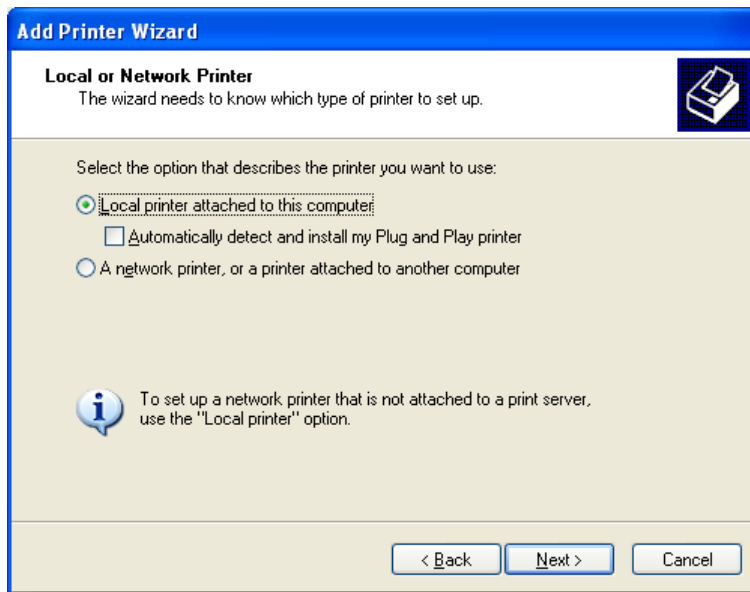
## Connecting a Dascom DP-540/55x/56x Printer to Windows® XP

1. Open the Printers and Faxes Folder.

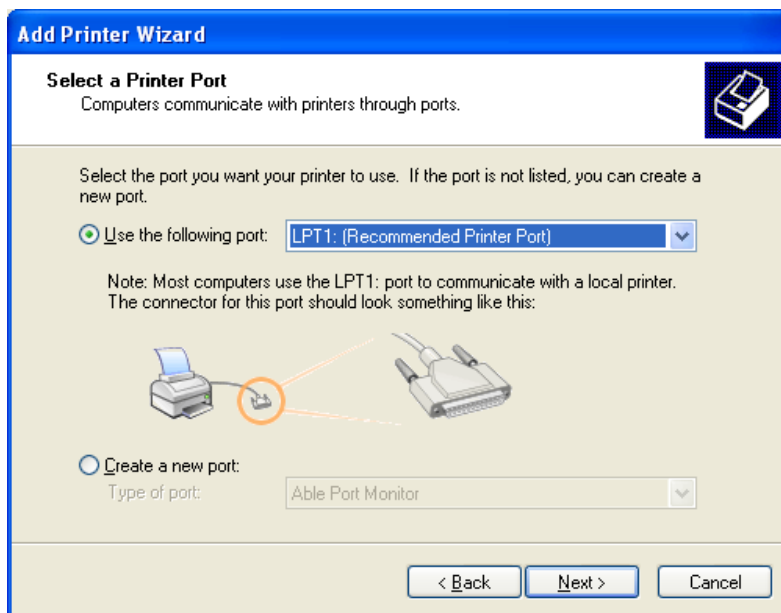


2. Select "Add a Printer".
3. The Welcome to the Add Printer Wizard will start. Click "Next".

4. The Local or Network Printer dialog will open.

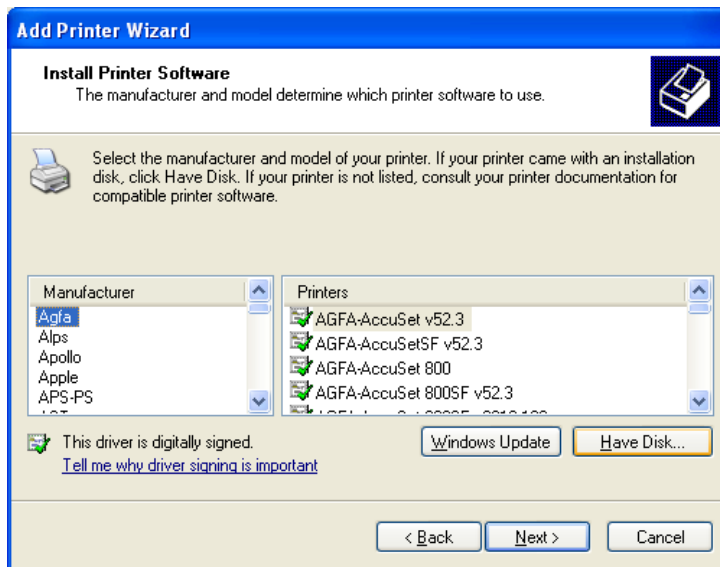


5. Select the correct connection type for the printer. Typically thermal printers are connected locally.
6. Uncheck "Automatically detect and install plug and play printer".
7. Click "Next".

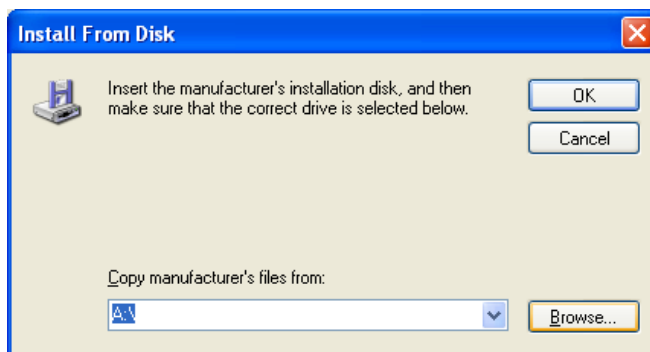


8. Select the port the printer is connected to.

9. Click “Next”.

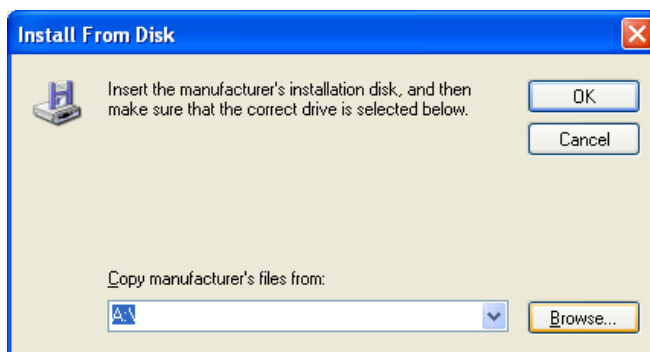


10. Click “Have Disk...”.



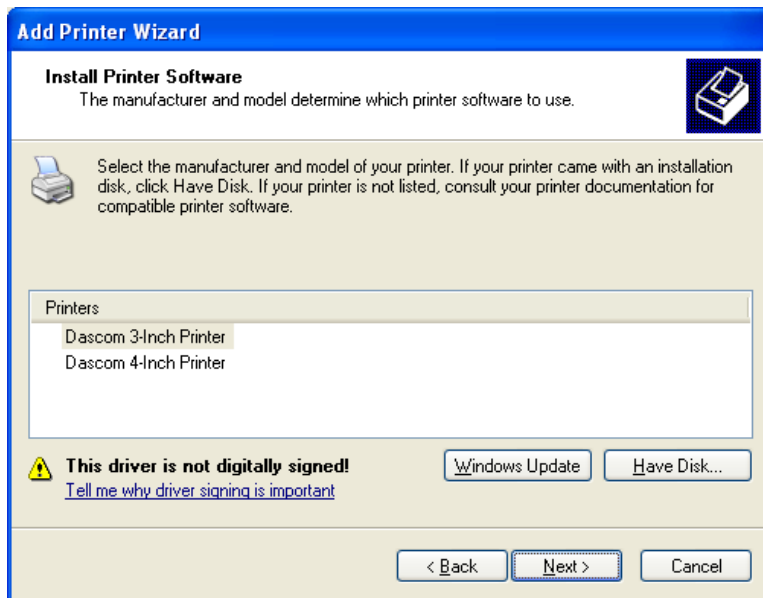
11. Click “Browse...”.

12. Browse to the folder where you placed (unzipped) the files.

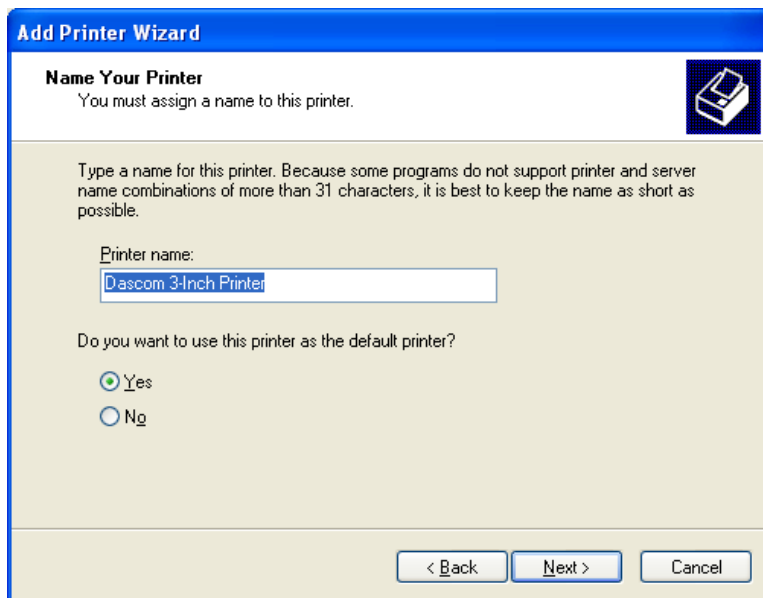


13. Select the “DascomXp.INF” file and click “Open”.

14. Click “OK”.



15. Select the 3-inch or 4-inch printer and click “Next”.



16. Change the name of the printer, if desired, and click “Next”.

17. Set the printer sharing properties and click “Next”.

18. Select “Yes” to print a test page and click “Next”.

19. Click “Finish” at which time a dialog will display informing you that the driver has not passed the Windows Logo testing.



20. Click “Continue Anyway”.
21. The driver installation will complete and new printer will now be show in Printers and Faxes.